

7 ±1W <b>W</b>	>80 <b>CRI</b>	3000 <b>K</b>	90° TYPE V	3 YEARS WARRANTY
IP 67	IK 09	ETL	CE	RoHS

**General**

Product name:	FL-PW-7W-830-2IPD-ETL/CE
Product code:	
Electrical number:	
Customer code:	

**Technical Data**

Max ambient temp (°C):	+55
Min ambient temp (°C):	-45
IP-rating:	67
IK-rating:	09
Product warranty:	3

**Electrical Data**

Total consumption (W):	7 ±1W
Minimum Input Voltage -10% (VAC):	100
Maximum Input voltage +10% (VAC):	277
Minimum Frequency -5% (Hz):	50
Maximum Frequency +5% (Hz):	60
PF:	>0.9

**Ballast/Driver**

Type of Ballast/Driver:	ECG
Number of Ballast/Driver:	1
Control Type:	ON/OFF
Manufacturer:	
Driver IP-Rating:	IP65

**Light Data**

Light Source:	LED
Chip Manufacturer:	Osram 3030
Lamp Power (W):	7
Luminous Flux @4000K:	900
Energy Efficiency (lm/W):	129
SDCM (MacAdams):	5
CRI:	>80
CCT:	3000

**Optic**

Material of the Diffuser:	Opal PC
Output Angle (°):	120
UGR:	

**Rated System Lifetime**

LM80/TM-21:	
Lifetime 1:	>40 000 @Ta 25 °C
Lifetime 2:	

**Dimensions**

Net weight (kg):	0,96
Height (mm):	59
Width (mm):	86
Length (mm):	307,6 (with IPD)

**Packing Information**

Gross weight (kg):	1
Height (mm):	65
Width (mm):	90
Length (mm):	250
Packages per pallet:	

**Materials**

Housing Colour Code:	RAL9002
Housing Main Material 1:	Die cast aluminium
Bracket Material:	Die cast aluminium
Diffuser Material:	Opal Polycarbonate

**Termination**

Type of cable gland:	IPD WD 3P2,5 M20
Number of cable glands:	2
Minimum cable diameter:	6
Maximum cable diameter:	13
Termination:	Push in terminal
Type of blind-plug:	
Number of blind plugs:	

**Installation**

Mounting:	Surface mounting
Safety wire:	N/A
Bracket type:	fixed
Through wiring:	3 x 1,5 mm2

**Electrical Values / Circuit Breakers**

Inrush current I <sub>max</sub> :	
Inrush current time:	
B10:	17pcs
B16:	N/A
B20:	N/A
C10:	17pcs
C16:	N/A
C20:	N/A

NOTE! These are maximum values based on inrush current.  
 Values may differ depending on environment and circuit breaker type.  
 Calculations based on ABB S200-series circuit breaker values.

### Certificates & Standards

#### Product Certificates & Complying Standards:

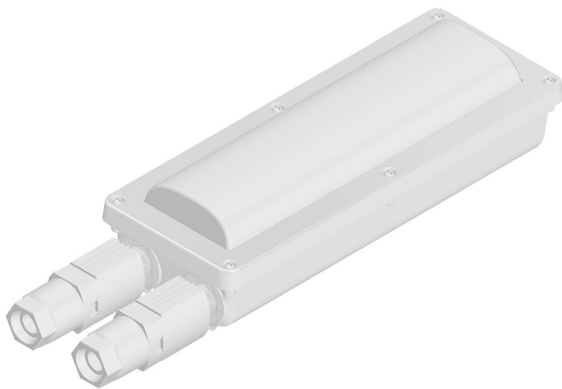
- ETL Certification 5020028
- CE Certification according to the standard;
- EN60598-2-1:1989, EN 60598-1:2008+A11:2009,
- EN 62493:2010, EN 62471:2008
- LED Driver UL registered
- Standard for Safety for Luminaires, UL 1598
- Standard Practice for Operating Salt Spray (Fog) Apparatus (ISO 10289:1999)
- DIN 50 021-1998 (DIN 50 021-SS)
- DIN EN ISO 12944-2:2017

### Accessories

### Product Images



FL-PW-7W with 2IPD

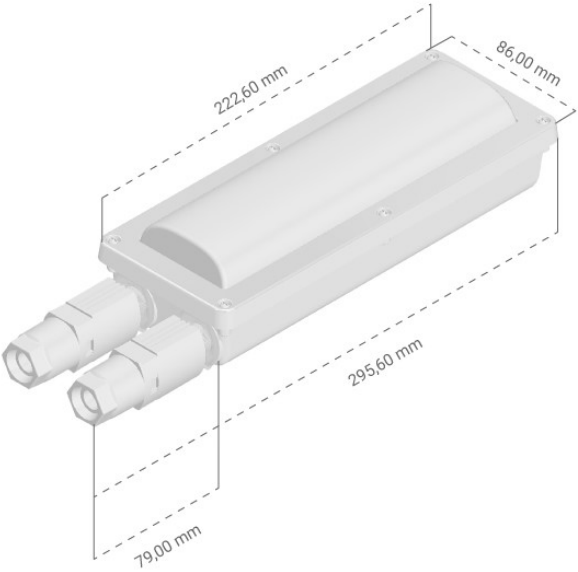
Phoenix Contact IPD series connector for 3x1,5 mm<sup>2</sup> cables

FL-PW-7W with 2IPD



FL-PW-7W with 2IPD

Dimensional Drawings



FL-PW-7W with 2IPD

Image Caption

Image Caption

Light Distribution Curves

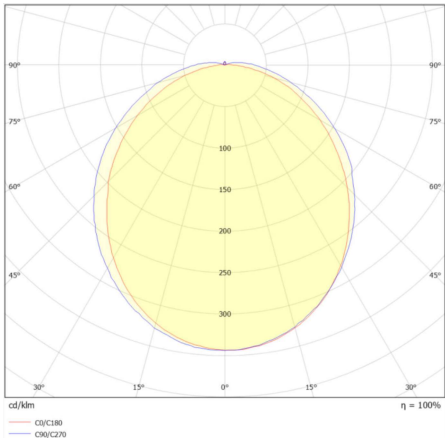


Image Caption



No image

Image Caption