

**3**YEARS  
WARRANTYIP  
65**RoHS**

These information displays can be used to show text, images, moving objects, for example, to inform operators' around moving equipments. These can be configured to various sizes.

Designed and built to outdoor for industrial segment.

**General**

Product name:	FL-LED-DISP-MG-xxx-xxx-P8-
Product code:	

**Technical Data**

Max. ambient temp (°C):	+65
Min. ambient temp (°C):	-40
IP-rating:	65
Product warranty:	3

**Electrical Data**

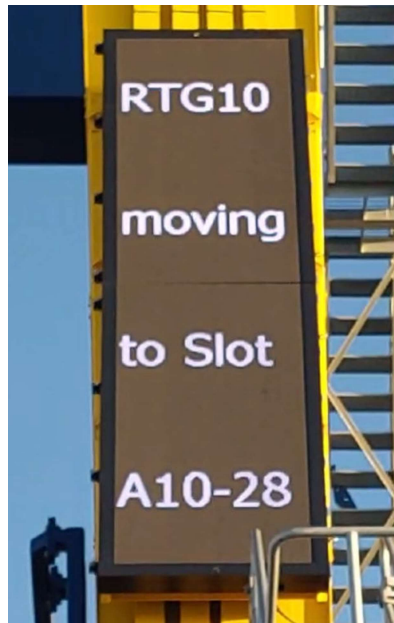
Max/Avg. consumption (W/m2):	520 / 300
Min. Input Voltage -10% (VAC):	100
Max. Input voltage +10% (VAC):	240
Min. Frequency -5% (Hz):	50
Max. Frequency +5% (Hz):	60
PF:	>0.9
Protection class (IP):	IP65

**Electrical Values / Circuit Breakers**

Inrush current I <sub>max</sub> (A):	36.3A
Inrush current time:	164µs
Breaker C16/C20:	1 display / 2 displays

**Display module**

Module size (mm):	128x256mm
Pixel size (mm):	8
Module resolution:	16x32
Density (pixel/m2):	15 633
Brightness (cd/m2):	5200
Viewing angle (deg):	175/175
Frame rate (Hz):	30
Refresh rate (Hz):	1000



Display size 1024x3840mm with pixel pitch P8 display installed on the container crane

**Materials**

Housing Colour Code:	RAL9002 or other by request
Housing Main Material:	AISI304
Fixing Material:	AISI316
Coating method:	powder coating

**Termination**

Type of cable gland:	M20 Nickel plated brass
Number of cable glands:	Depends on configuration
Power supply connection:	Connected to main switch
Communication connection:	RJ45 or terminal blocks
Termination:	Push in terminal

**Installation**

Mounting:	Surface mounting
-----------	------------------

**Communication options**

Interface:	TCP, UDP, RS-232, RS-485
Address:	programmable
Empty1:	Intentionally left blank
Empty2:	Intentionally left blank

**Rated System Lifetime**

Service life:	100 000
---------------	---------

**Certificates & Standards**

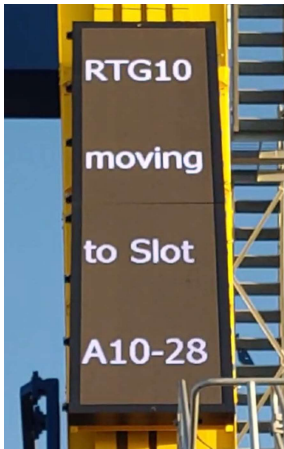
Product Certificates & Complying Standards:

CE (ETL on request)

**Additional Information**

X

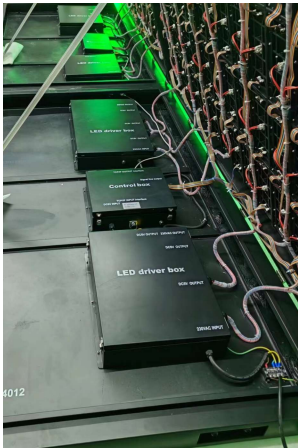
**Product Images**



FL-LED-DISP-MG-128x480-P8-CE



FL-LED-DISP-MG-128x480-P8-CE



Control system



Test unit

**Dimensional Drawings**

Test unit

**Wiring Diagram**