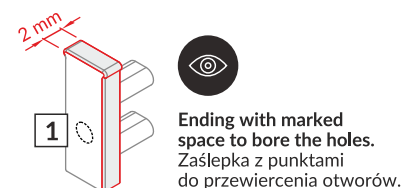
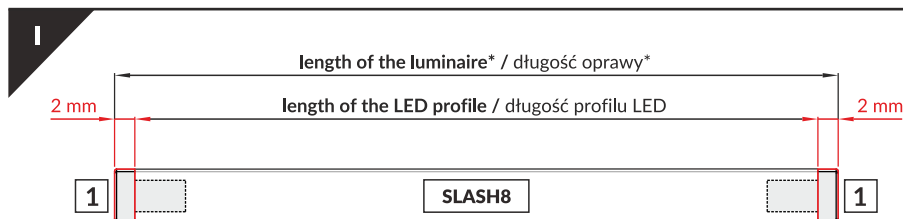
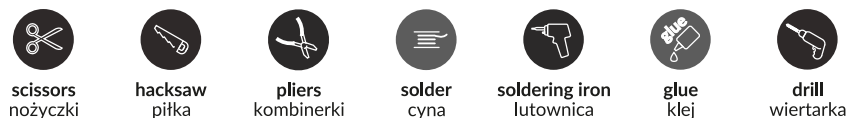
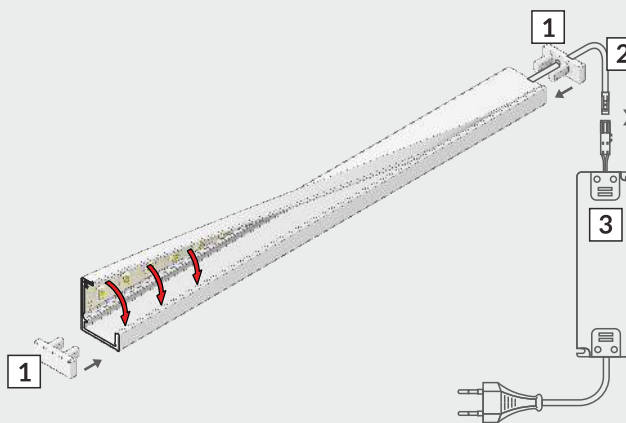
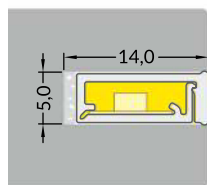
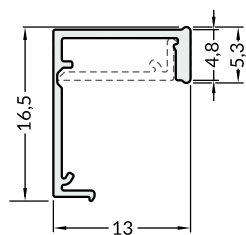
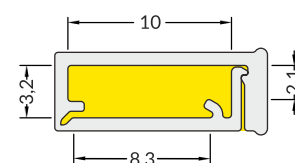
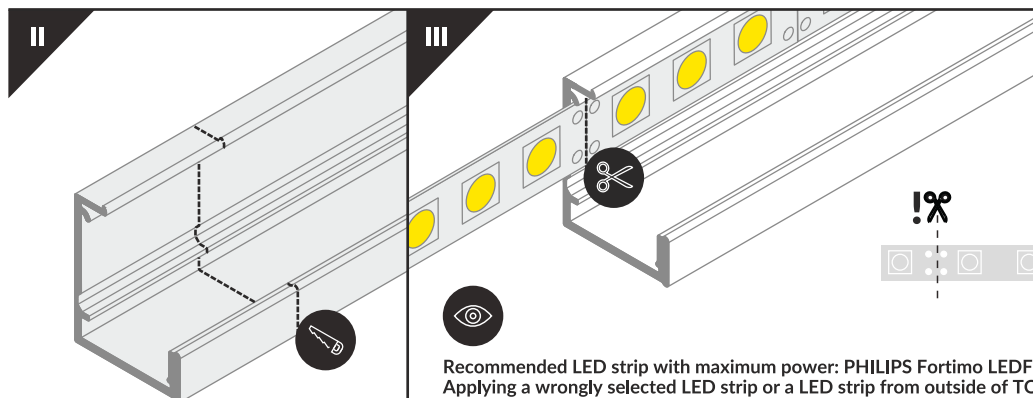


# SLASH8

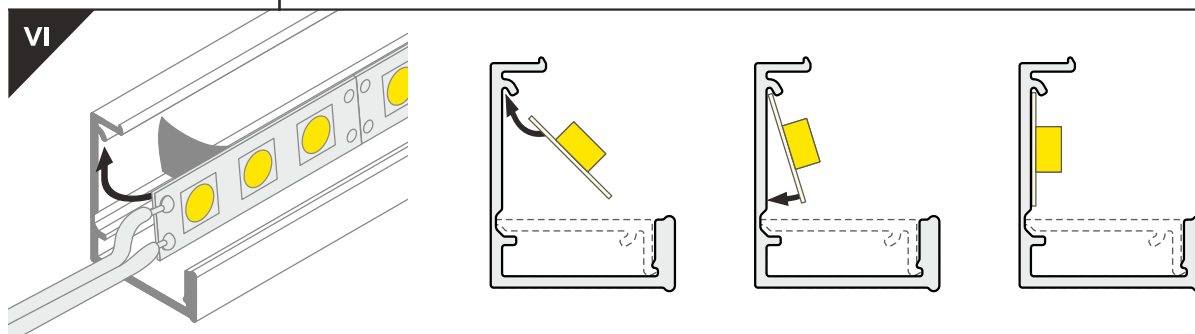
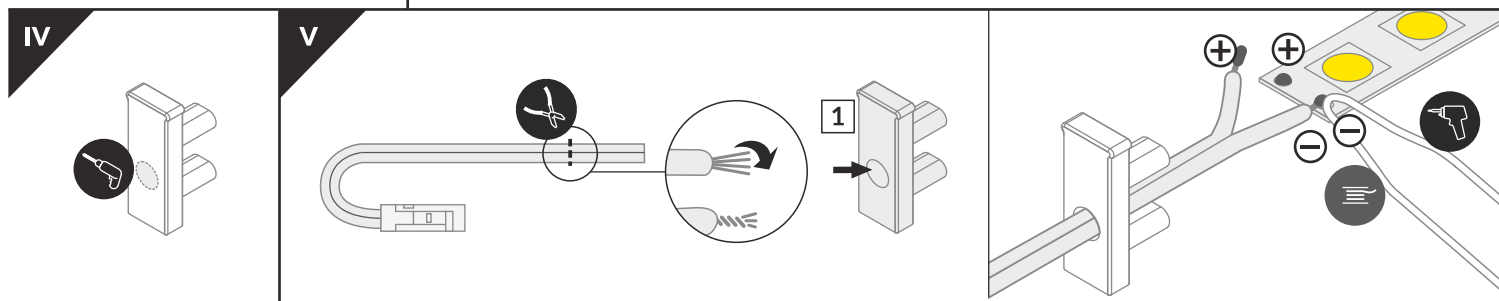
RECESSED PROFILE / PROFIL WPUSTOWY



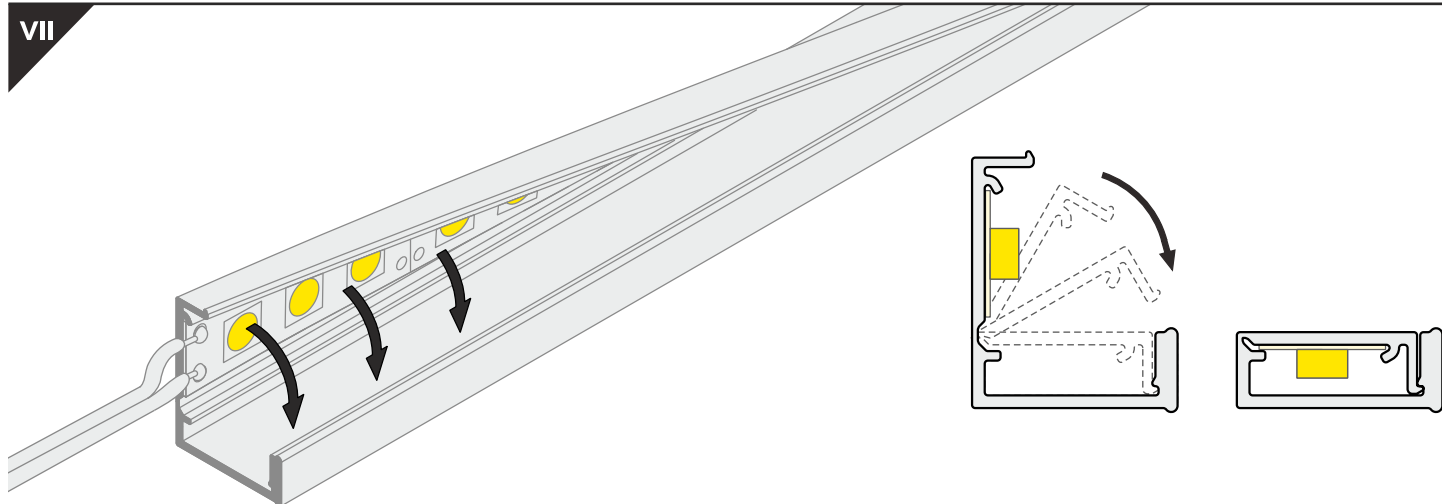
\*Length of mounting space = length of luminaire + 1 mm per each meter of the profile  
(due to profile temperature expandability, especially when applying LED strips with large power, i.e. 20 W/m).  
\*Długość otworu montażowego = długość oprawy + 1 mm na każdy metr profilu  
(ze względu na rozszerzalność temperaturową profilu, szczególnie przy zastosowaniu taśm LED dużej mocy, np. 20 W/m).



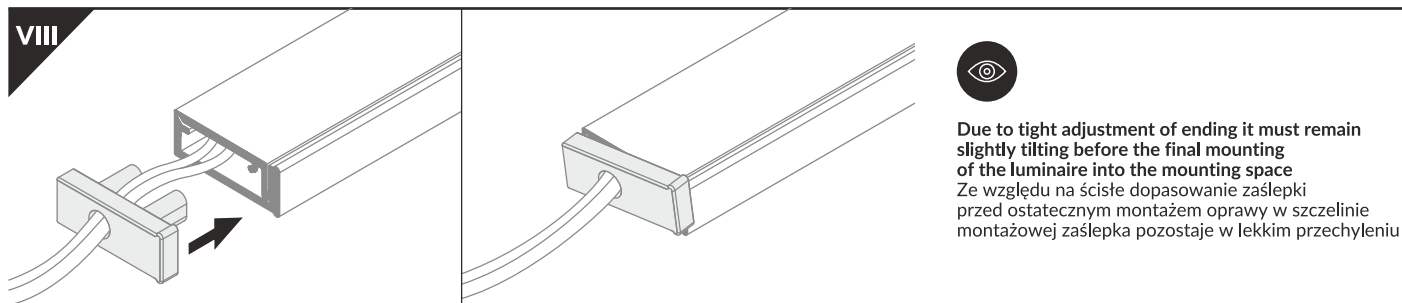
Dimensions of the space to install LED source  
Wymiary przestrzeni do zamontowania źródła LED



## VII

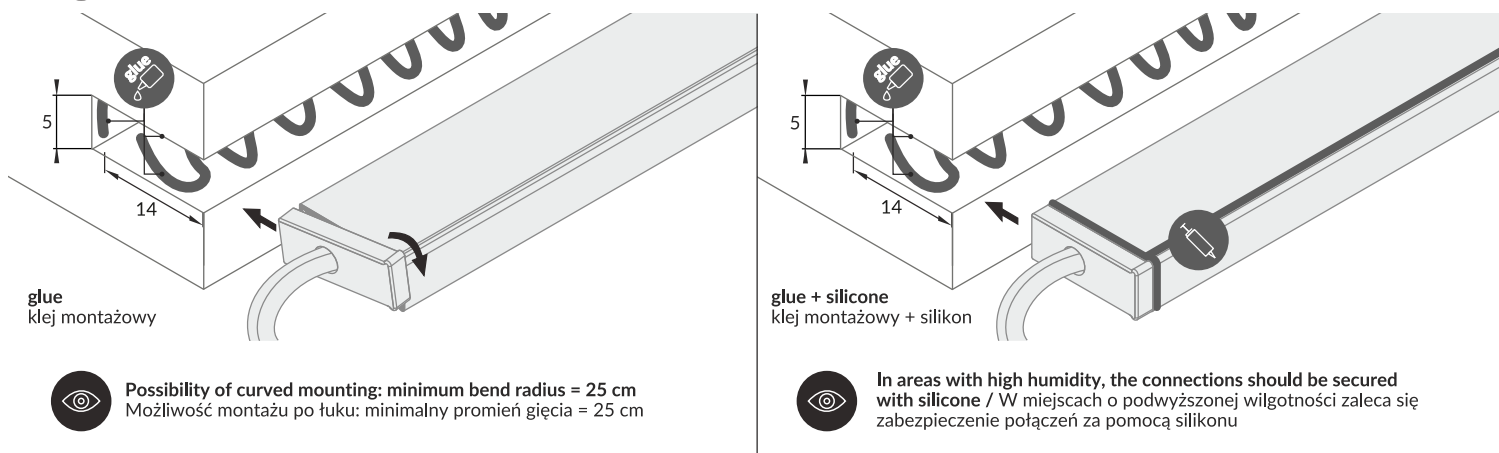


## VIII

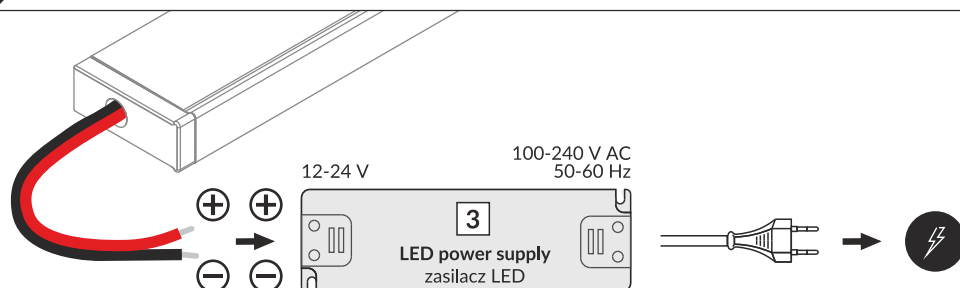


## IX MOUNTING / MONTAŻ

Pay attention to the correct positioning of the ending / Zwrócić uwagę na poprawne pozycjonowanie zaślepki



## X POWER SUPPLY / ZASILANIE



## ACCESSORIES / AKCESORIA

power switches / włączniki  
controller + remote / sterownik + pilot  
movement sensors / czujniki ruchu