

| | | | | |
|-------------------|-------------------|------------------|---------------|------------------------|
| 7 ±1W W | >80 CRI | 4000 K | 90° TYPE V | 3 YEARS WARRANTY |
| IP 67 | IK 09 | ETL | CE | RoHS |

General

| | |
|--------------------|--------------------------|
| Product name: | FL-PW-7W-840-2IPD-ETL/CE |
| Product code: | |
| Electrical number: | |
| Customer code: | |

Technical Data

| | |
|------------------------|-----|
| Max ambient temp (°C): | +55 |
| Min ambient temp (°C): | -45 |
| IP-rating: | 67 |
| IK-rating: | 09 |
| Product warranty: | 3 |

Electrical Data

| | |
|-----------------------------------|-------|
| Total consumption (W): | 7 ±1W |
| Minimum Input Voltage -10% (VAC): | 100 |
| Maximum Input voltage +10% (VAC): | 277 |
| Minimum Frequency -5% (Hz): | 50 |
| Maximum Frequency +5% (Hz): | 60 |
| PF: | >0.9 |

Ballast/Driver

| | |
|---------------------------|--------|
| Type of Ballast/Driver: | ECG |
| Number of Ballast/Driver: | 1 |
| Control Type: | ON/OFF |
| Manufacturer: | |
| Driver IP-Rating: | IP65 |

Light Data

| | |
|---------------------------|------------|
| Light Source: | LED |
| Chip Manufacturer: | Osram 3030 |
| Lamp Power (W): | 7 |
| Luminous Flux @4000K: | 900 |
| Energy Efficiency (lm/W): | 129 |
| SDCM (MacAdams): | 5 |
| CRI: | >80 |
| CCT: | 4000 |

Optic

| | |
|---------------------------|---------|
| Material of the Diffuser: | Opal PC |
| Output Angle (°): | 120 |
| UGR: | |

Rated System Lifetime

| | |
|-------------|-------------------|
| LM80/TM-21: | |
| Lifetime 1: | >40 000 @Ta 25 °C |
| Lifetime 2: | |

**Dimensions**

| | |
|------------------|------------------|
| Net weight (kg): | 0,96 |
| Height (mm): | 59 |
| Width (mm): | 86 |
| Length (mm): | 307,6 (with IPD) |

Packing Information

| | |
|----------------------|-----|
| Gross weight (kg): | 1 |
| Height (mm): | 65 |
| Width (mm): | 90 |
| Length (mm): | 250 |
| Packages per pallet: | |

Materials

| | |
|--------------------------|--------------------|
| Housing Colour Code: | RAL9002 |
| Housing Main Material 1: | Die cast aluminium |
| Bracket Material: | Die cast aluminium |
| Diffuser Material: | Opal Polycarbonate |

Termination

| | |
|-------------------------|------------------|
| Type of cable gland: | IPD WD 3P2,5 M20 |
| Number of cable glands: | 2 |
| Minimum cable diameter: | 6 |
| Maximum cable diameter: | 13 |
| Termination: | Push in terminal |
| Type of blind-plug: | |
| Number of blind plugs: | |

Installation

| | |
|-----------------|------------------|
| Mounting: | Surface mounting |
| Safety wire: | N/A |
| Bracket type: | fixed |
| Through wiring: | 3 x 1,5 mm2 |

Electrical Values / Circuit Breakers

| | |
|-----------------------------------|-------|
| Inrush current I _{max} : | |
| Inrush current time: | |
| B10: | 17pcs |
| B16: | N/A |
| B20: | N/A |
| C10: | 17pcs |
| C16: | N/A |
| C20: | N/A |

NOTE! These are maximum values based on inrush current.
 Values may differ depending on environment and circuit breaker type.
 Calculations based on ABB S200-series circuit breaker values.

Certificates & Standards

Product Certificates & Complying Standards:

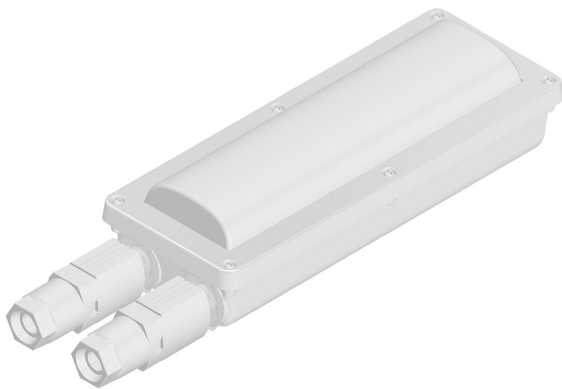
- ETL Certification 5020028
- CE Certification according to the standard;
- EN60598-2-1:1989, EN 60598-1:2008+A11:2009,
- EN 62493:2010, EN 62471:2008
- LED Driver UL registered
- Standard for Safety for Luminaires, UL 1598
- Standard Practice for Operating Salt Spray (Fog) Apparatus (ISO 10289:1999)
- DIN 50 021-1998 (DIN 50 021-SS)
- DIN EN ISO 12944-2:2017

Accessories

Product Images



FL-PW-7W with 2IPD

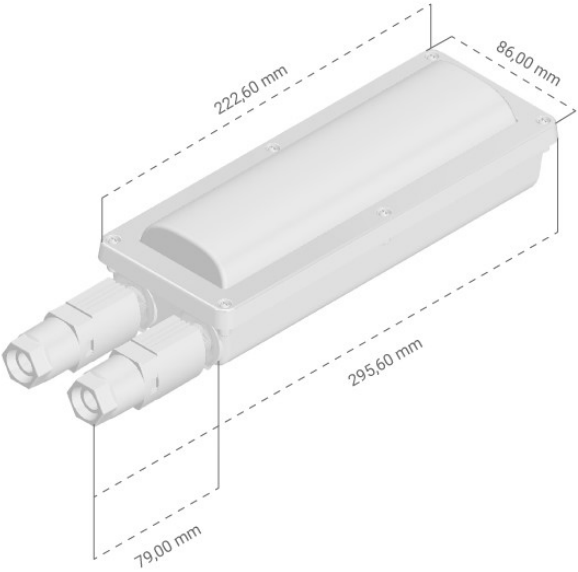
Phoenix Contact IPD series connector for 3x1,5 mm² cables

FL-PW-7W with 2IPD



FL-PW-7W with 2IPD

Dimensional Drawings



FL-PW-7W with 2IPD

Image Caption

Image Caption

Light Distribution Curves

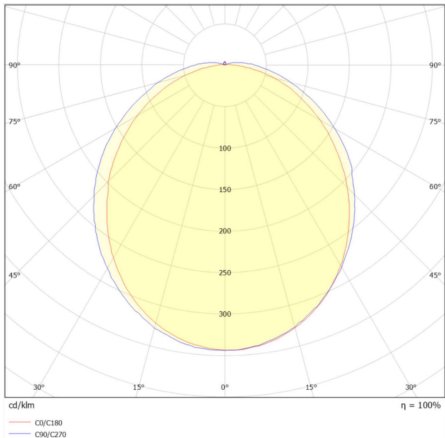


Image Caption



No image

Image Caption