



Product Name	Dimensions (mm)*	Power (W)* <sup>2</sup>	Luminous Flux (lm)* <sup>2</sup>	Energy Efficiency* <sup>2</sup>	Weight (kg)* <sup>3</sup>
FL-CC-MG-40W	342x437x95	40W	7200 (@4000K)	180lm/W	4.8
FL-CC-MG-100W	342x437x95	100W	15 500 (@4000K)	155lm/W	4.8
FL-CC-MG-135W	342x437x95	135W	20 250 (@4000K)	150lm/W	4.8
FL-CC-MG-240W	555x309x119(-231)	240W	34 800 (@4000K)	145lm/W	8.7
FL-CC-MG-400W	555x608x267	400W	62 000 (@4000K)	155lm/W	17.4
FL-CC-MG-480W	555x608x267	480W	69 600 (@4000K)	145lm/W	17.4
Brackets	Dimensions (mm)				
40W-135W UBR	322x60x180				
240W UBR	355x60x180				
240W ZBR	355x70x245				
400-480W UBR	355x60x180				
400-480W ZBR	355x94x220				
400-480W HD	500x145x310				

\*Without IPD connectors, \*\*(+/- 10 %), \*<sup>3</sup> Without bracket

Marine grade outdoor floodlight is built to tough environment. Ideal for high-masts and cranes and moving machinery. Features includes like silicone seals, breather valves and stainless steel safety wires. Anti-corrosion painting and powder coating to meet even the strictest corrosion requirements and is certified to the following standards (BIS, DIN 50 021-1998, DIN 50 021-SS and DIN EN ISO 12944-2:2017 according to CX class)

## General

Product family:	FL-CC-MG Product Family Datasheet
Electrical number:	
Customer code:	

## Technical Data

Max ambient temp (°C):	+55 (+45 for 480W ETL model only)
Min ambient temp (°C):	-40
IP-rating:	66
IK-rating:	10
Product warranty:	5-8

## Electrical Data

Minimum Input Voltage (VAC):	100 (200VAC for H voltage selection) -10%
Maximum Input voltage (VAC):	277 (480VAC for H voltage selection) +10%
Minimum Frequency (Hz):	50 (-5%)
Maximum Frequency (Hz):	60 (+5%)
PF:	>0.9

## Ballast/Driver

Type of Ballast/Driver:	ECG
Number of Ballast/Driver:	1 or 2
Control Type:	ON/OFF (ETL+CE), DALI, 1-10V (only CE)
Manufacturer:	Meanwell or Sosen
Driver IP-Rating:	IP65-IP67

## Light Data

Light Source:	LED
Chip Manufacturer:	Lumileds
SDCM:	<4
CRI:	>70
CCT:	3000K/4000/5000 (others available)

## Optic

Material of the Diffuser:	Opal PC
Output Angle (°):	30, 60, 90
UGR:	<22

Rated System Lifetime	
LM80/TM-21:	L70B10
Lifetime 1:	100 000 @Ta 25 C
Lifetime 2:	80 000 @Ta 40 C

Materials	
Housing Colour Code:	RAL7047
Housing Main Material 1:	Aluminium, Class X marine grade coating
Bracket Material:	AISI316
Diffuser Material:	PC

Termination	
Type of cable gland:	IPD WD 5P2,5 or junction box
Number of cable glands:	1 to 2
Minimum cable diameter:	7mm
Maximum cable diameter:	16mm
Termination:	Spring loaded terminals
Type of blind-plug:	-
Number of blind plugs:	-

Installation	
Mounting:	Surface mount
Safety wire:	AISI 316 safety wire (each module)
Bracket type:	UBR, ZBR, SD (see drawings)
Through wiring:	5 x 2,5 mm

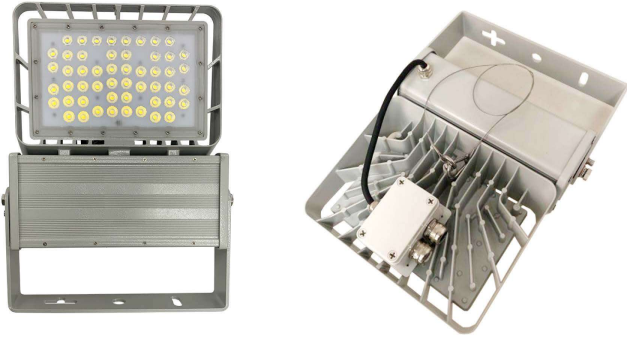
Certificates	
Product certificates:	<div><div>- UL 1598 Suitable for Wet Locations</div><div>- UL 1598A Marine Outside Type (saltwater)</div><div>- UL 844 Hazardous Locations</div><div>- CE</div><div>- ABS</div><div>- c ETL us Listed (5020028)</div><div>- Conforms to UL std. 1598</div><div>- Cert. to CSA std. C22.2 No. 250.0</div><div>- Suitable for wet locations</div></div>

Order Code										
Product Family	Series	Voltage	Power	CRI + CCT	Optic	Bracket	Accessories	Termination	Control	Cert.
FL-CC	MG	L*	40W	730	30D	UBR	SS	1IPD	On/Off *	CE
		H	100W	740	60D	ZBR		2IPD	DA	ETL
			135W	750	90D	SD		JB	1-10V	
			240W							
			400W							
			480W							

\* If chosen not marked to the order code.

Example code:  
FL-CC-MG-40W-740-30D-UBR-SS-1IPD-ETL/CE  
FL-CC: Product family  
MG: Marine Grade  
Voltage: 100-277VAC (not marked in the code)  
Power: 40W  
CRI: 70%  
CCT: 4000K  
Optic: 30D  
Bracket: UBR  
Accessories: SS (sun shade is default in MG product family)  
Termination: 1 IPD plug  
Control: On/Off (not marked in the code)  
Certification: ETL and CE certifications

## Product Images



40-135W model with U-bracket and junction box



40-135W model with U-bracket and IPD connectors



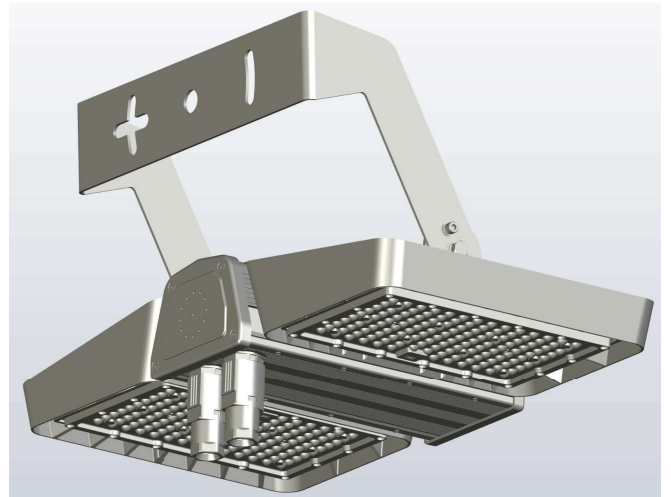
480W model with Z-bracket



480W model with Z-bracket and IPD connectors

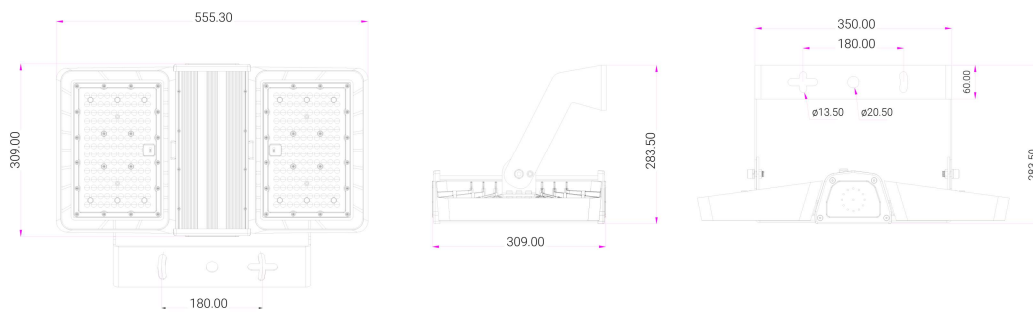
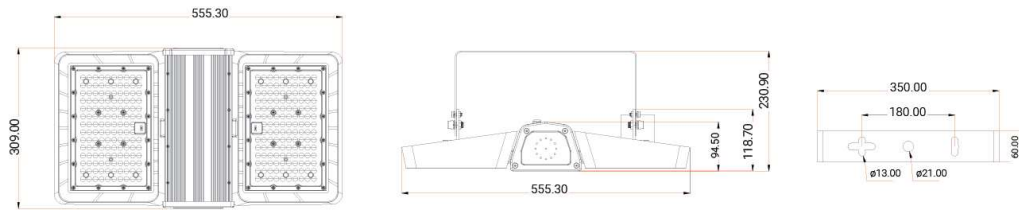
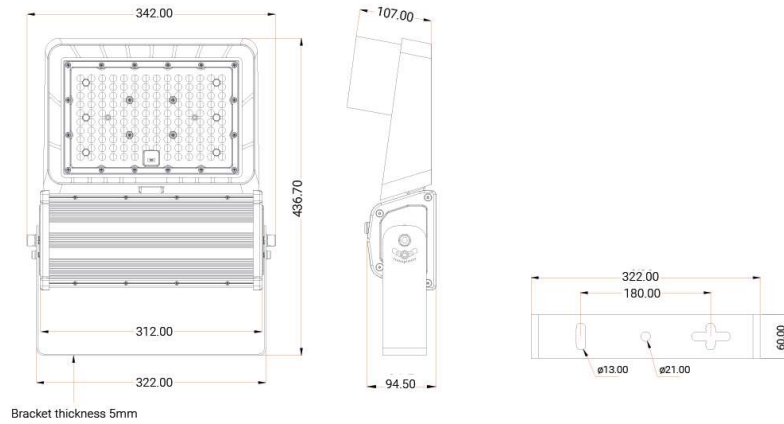


IPD WD 5-pole connector

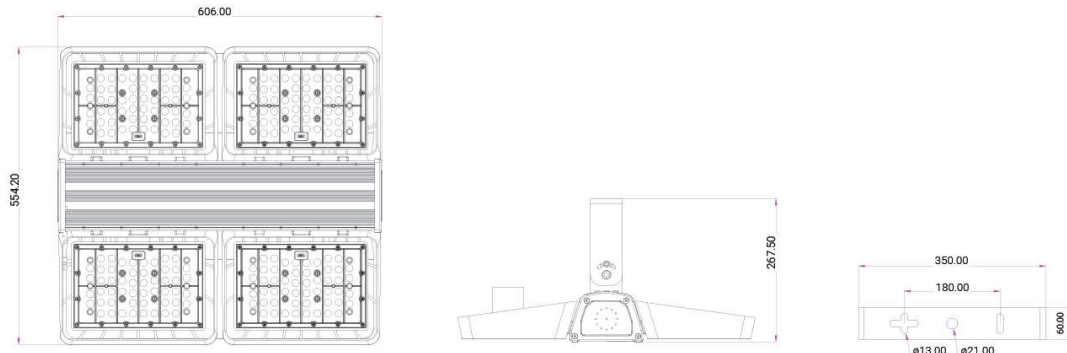


240W model with Z-bracket and IPD connectors

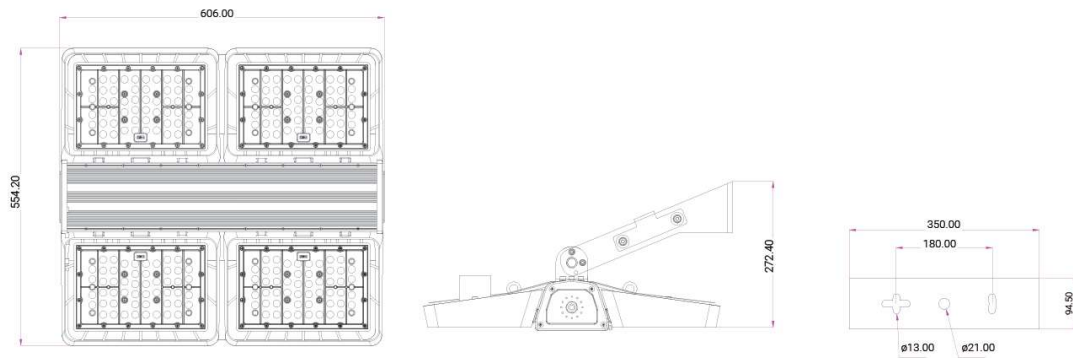
## Dimensional Drawings



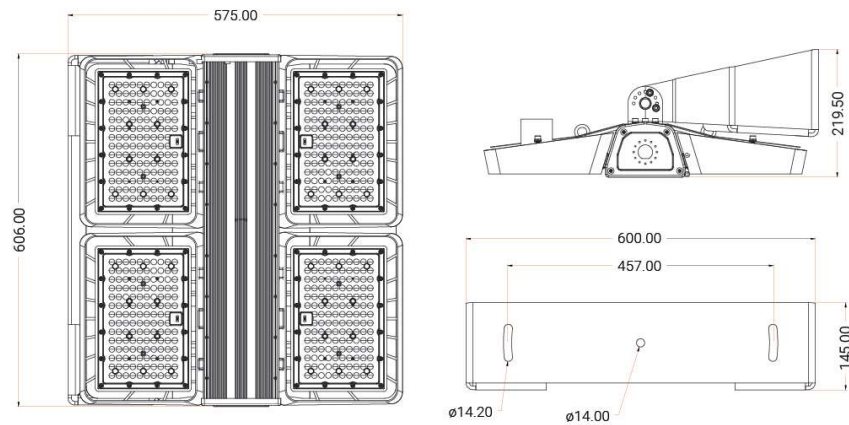
## Dimensional Drawings



FL-CC Marine Grade 400W/480W with U Bracket



FL-CC Marine Grade 400W/480W with Z Bracket

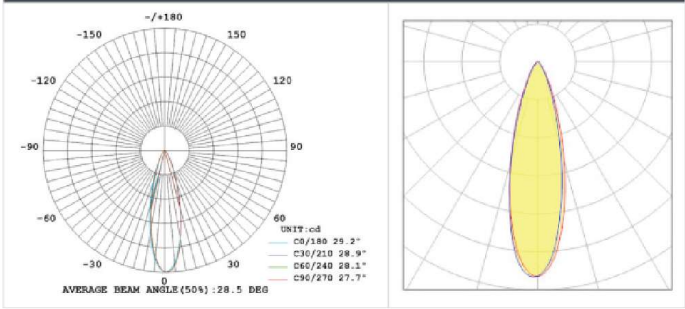


FL-CC Marine Grade 400W/480W with SUPERDUTY Bracket

Wiring Diagram

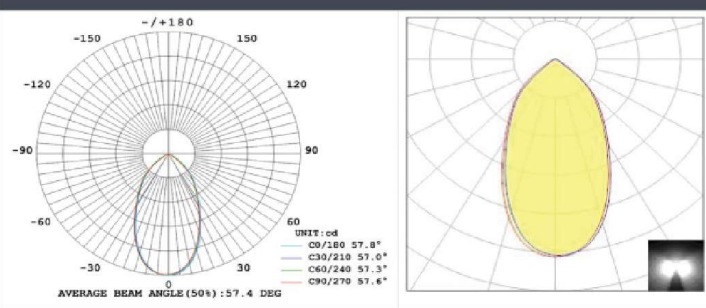
Light Distribution Curves

30° optic



Light Distribution Curves

60 ° optic



90° optic

